



ERF-AISBL

Association of European-level
Research Infrastructure Facilities

The voice of Research Infrastructures in Europe

**Dr. Jürgen Neuhaus, Technische Universität München
Heinz Maier-Leibnitz Zentrum, EB member ERF-AISBL**

www.erf-aisbl.eu

- ▶ **ERF is the largest association of European-level Research Infrastructures and networks of Research Infrastructures.**
- ▶ **Statutory mission:** *encouraging "the coordination, the development, the setting-up and the operation of high-quality infrastructures, open at world level, contributing to the strength of the European Research Area"*.
- ▶ **Vision and ambition:**
 - Representing the interests of Research Infrastructures towards decision-makers and funding agencies at EU and national levels
 - Promoting the long-term sustainability of RIs
 - Identifying and disseminating best practices in all areas of RI management and operation
 - Fostering multi-disciplinary exchanges and collaborations among RIs.

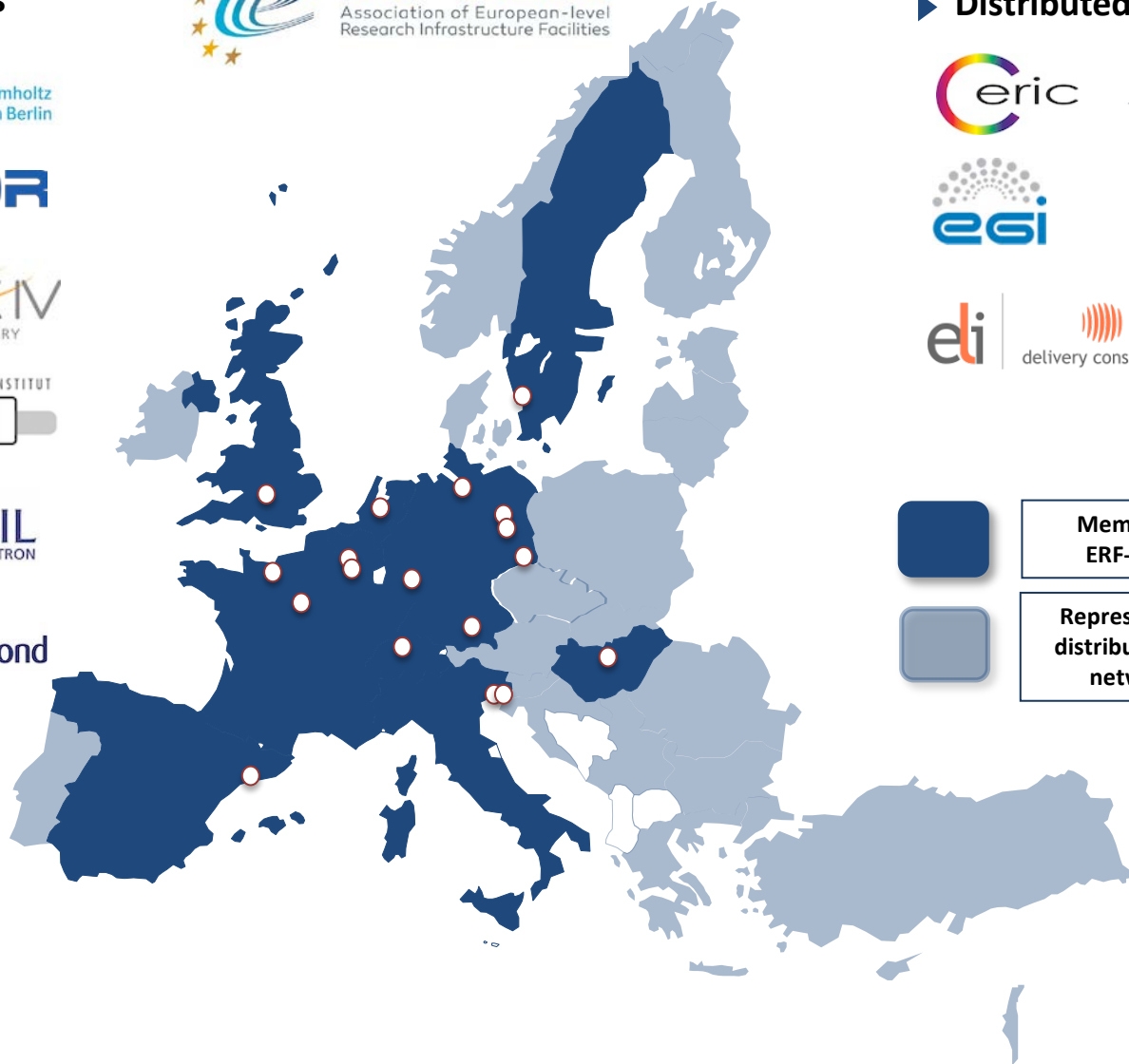
- ▶ **Legal structure:** international association under Belgian law (legal personality and capacity) since 2013



- ▶ **Statutory bodies:**
 - General Assembly: strategies, annual budget, admission of new Members
 - Executive Board: daily management
 - Chair
- ▶ **Conditions for accession:**
 - Membership open to operators or owners of European-level RIs or representatives of consortia of RIs
 - Members should provide open and quality-based international access to experimental devices, computing engines and/or research services unique in their fields.

A truly European membership across disciplines

► Single-sited facilities



► Distributed RIs & networks



	Members of ERF- AISBL
	Represented in distributed RIs / networks

ERF-AISBL activities

▶ Regular workshops

- Open access and open data
- Human resources mobility
- Energy sustainability
- Socio-economic impact of RIs
- Technology transfer
- Industrial relations
- **Public awareness of RIs**

▶ Chapters and working groups

- Best practices / Policy papers
- Coordination for better impact at European level

▶ Representation

- Participation in ERA Stakeholders' Platform