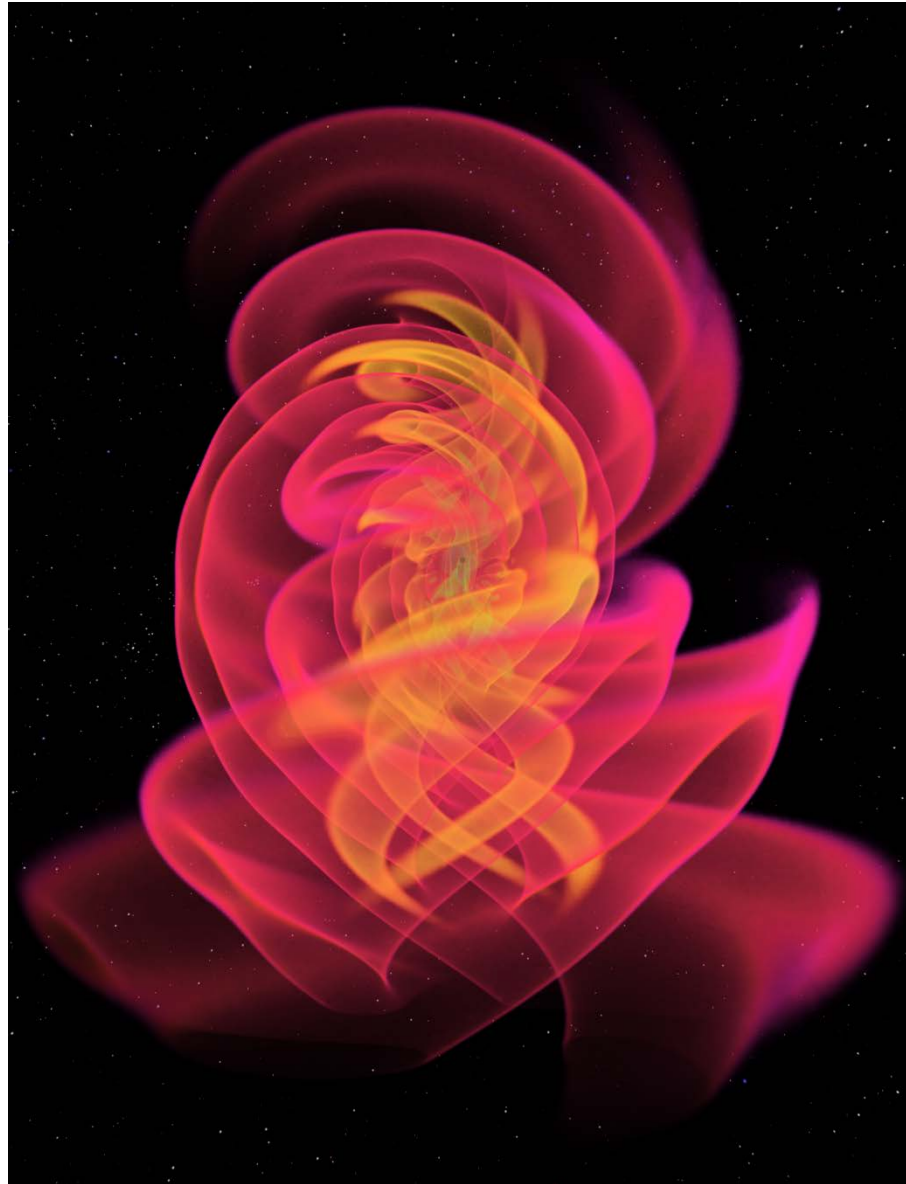
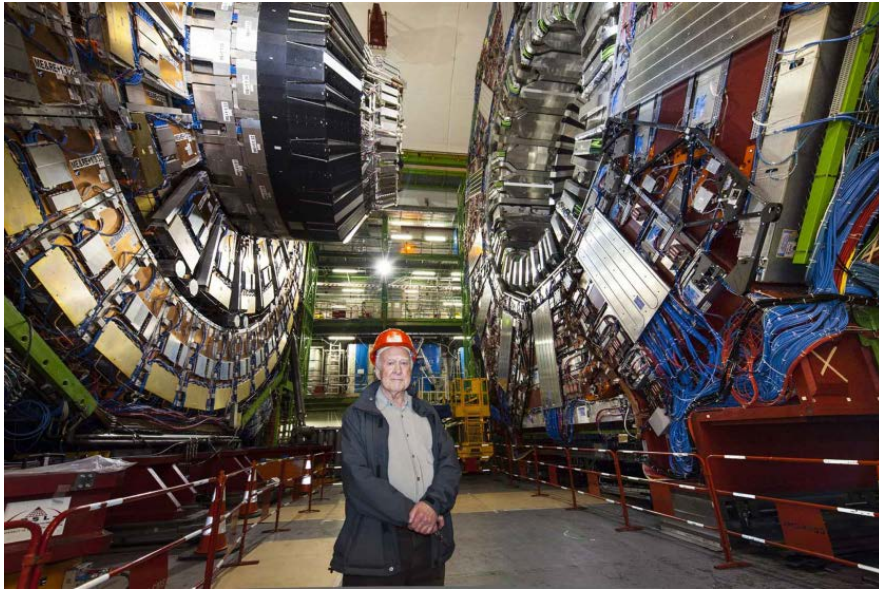


# **Evaluation of Research Infrastructure Investment and Public Engagement in the UK**

**Evaluation of Research Infrastructure at STFC – James Watson**  
**Evaluation of Public Engagement at STFC – Dan Hillier**

30<sup>th</sup> May 2017

# STFC - What do we do?

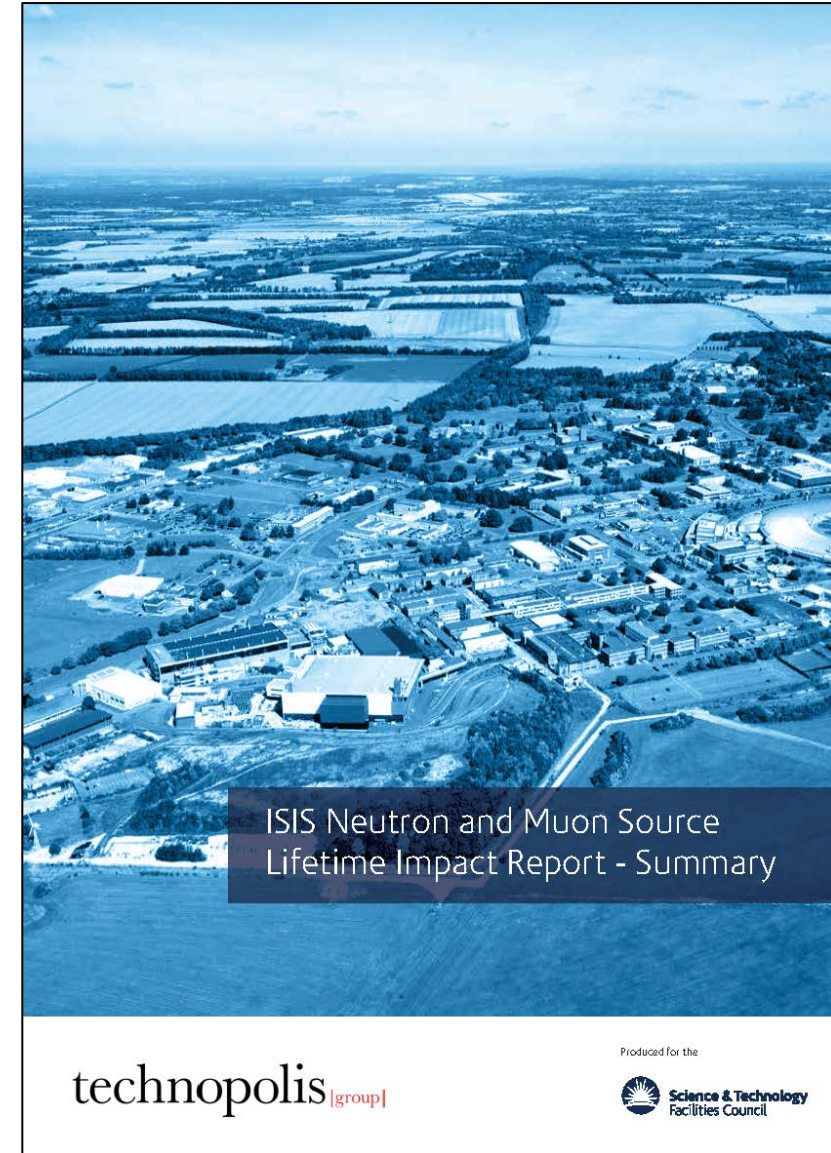
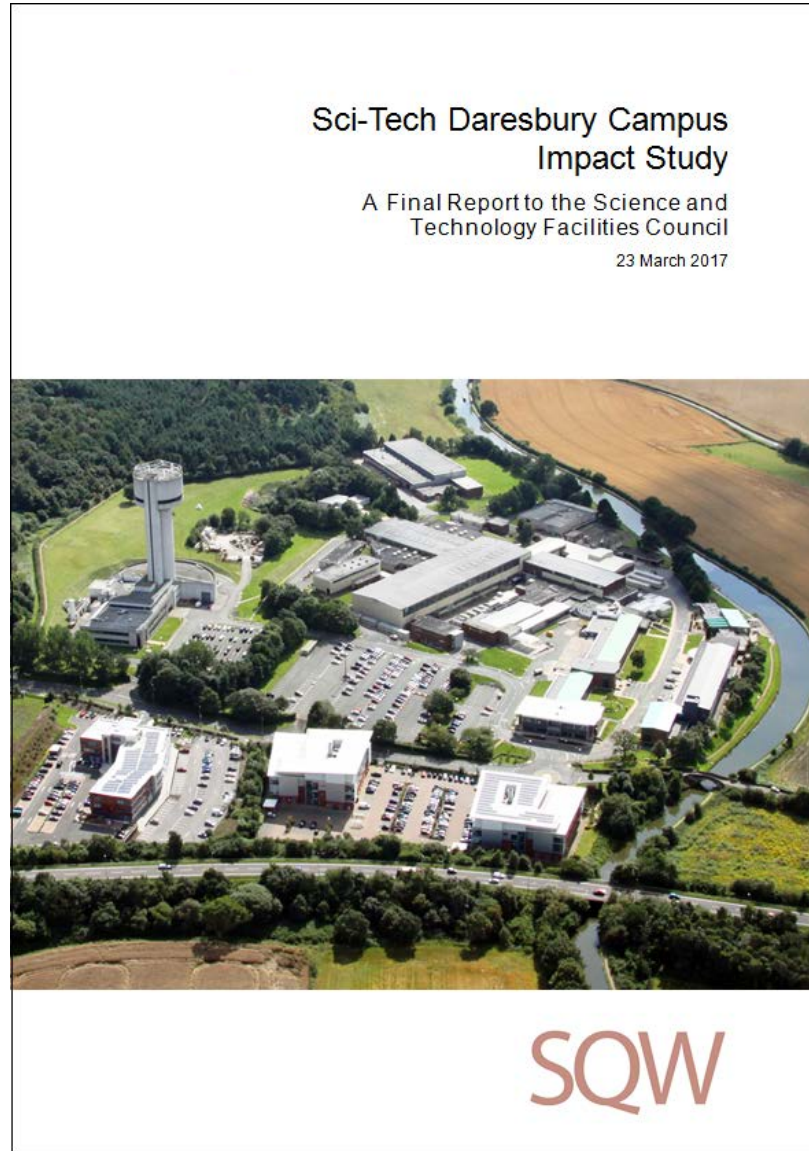


# What is impact?

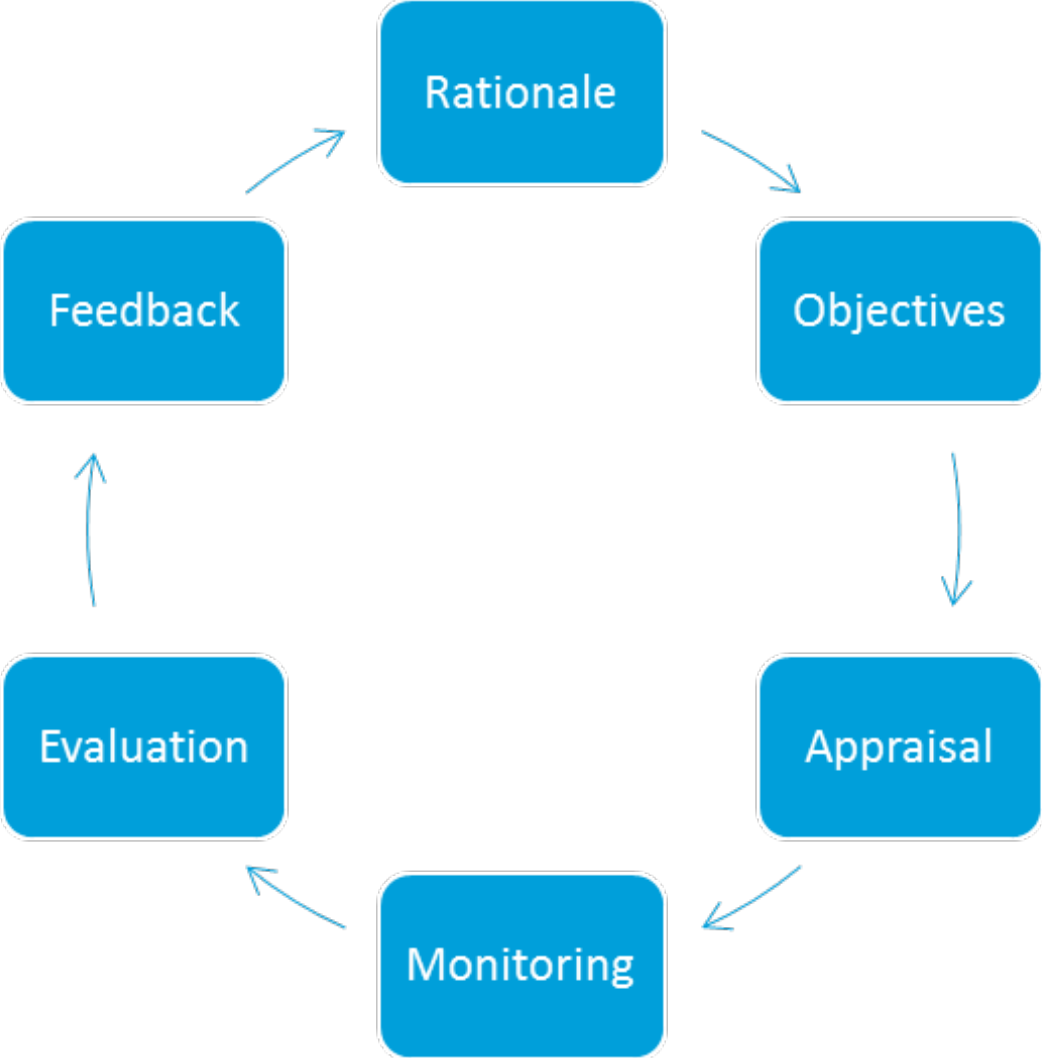
“An action or activity has an economic impact when it affects the welfare of **consumers**, the profits of **firms** and/or the revenue of **government**. Economic impacts range from those that are **readily quantifiable**, in terms of greater wealth, cheaper prices and more revenue, to those **less easily quantifiable**, such as effects on the environment, public health and quality of life”

Treasury Green Book Definition

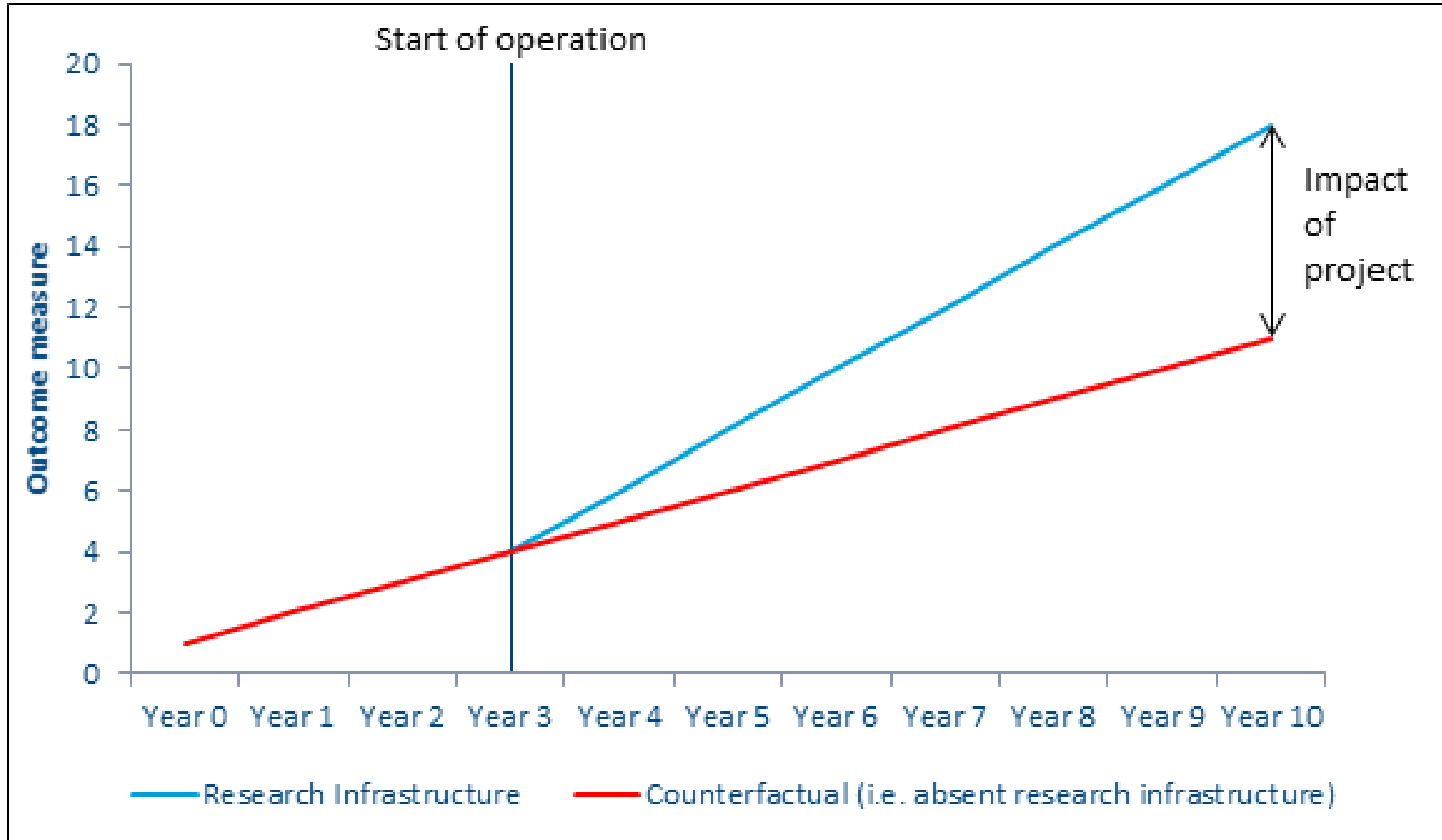
# Recent work



# Current Context



# Challenges



# Summary

- Increasing government focus on evaluation
- It's not easy
- ...we will get there!



# **Evaluation of Research Infrastructure Investment and Public Engagement in the UK**

**Evaluation of Research Infrastructure at STFC – James Watson**

**Evaluation of Public Engagement at STFC – Dan Hillier**

Jo Lewis, Derek Gillespie, Silke Zollinger, Karen Bultitude, Catherine Aldridge

30<sup>th</sup> May 2017



# What is STFC Public Engagement?

A large programme

Many partners

Diverse activities

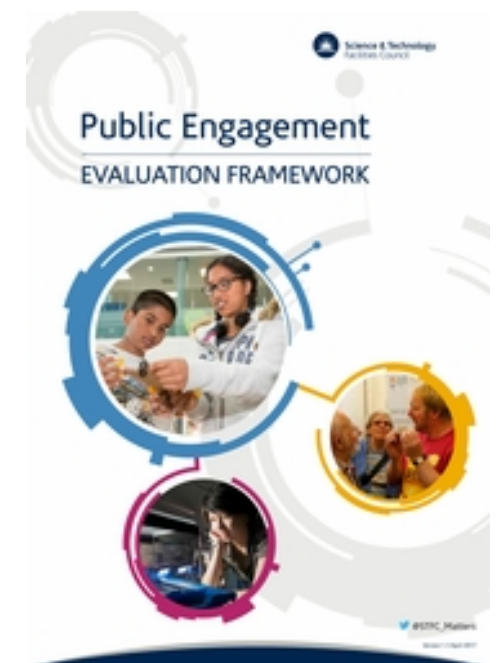


55% of schools engaged with STFC's Daresbury Laboratory in 2016 were from deprived communities.

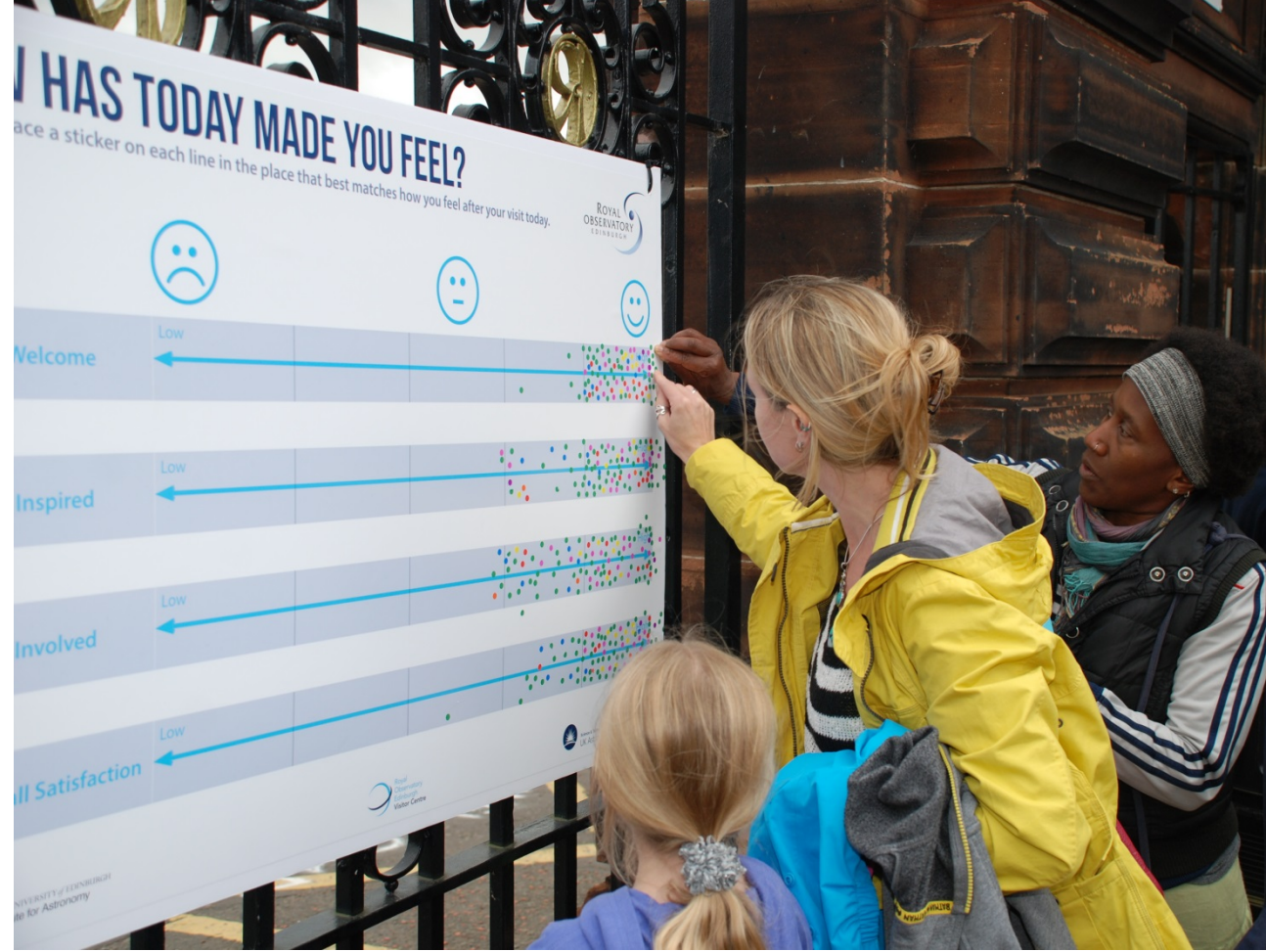
40% of females who came to the Harwell Campus Open Week in 2016 said they would like to find out more about STFC science and technology.

100% of UK teachers who visited CERN in 2016 said they would use the visit to highlight possible careers for their students.

# PE Strategy and PE Evaluation Framework



# Why do we evaluate?



# What are we measuring?

## 5 dimensions

Inputs

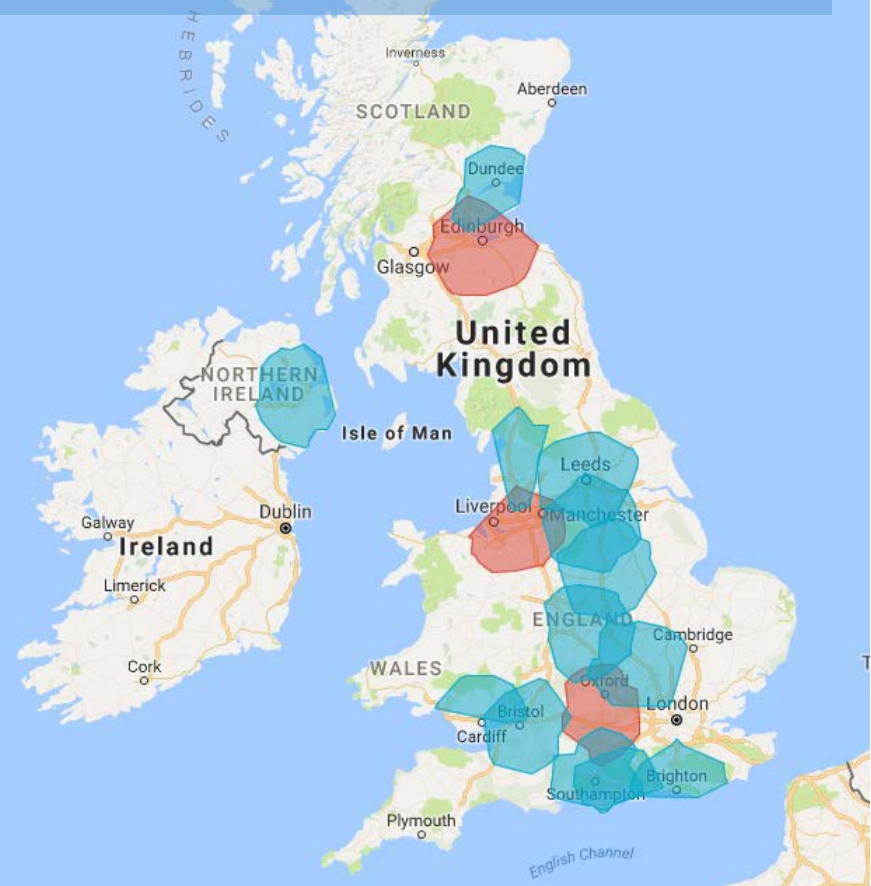
Outputs

Reach

Outcomes

Processes

“Geographically remote is > 1 hour drive from a centre of STEM for STFC science and technology.”



# How did we get here? Where are we going?



- 2+ years to develop the framework
- Collaborative effort by STFC PE team
- Good to develop framework in parallel with PE strategy
- Good to pilot the data-gathering methods

[www.stfc.ac.uk/public-engagement/strategy-and-evaluation](http://www.stfc.ac.uk/public-engagement/strategy-and-evaluation)

[dan.hillier@stfc.ac.uk](mailto:dan.hillier@stfc.ac.uk)

**Thank you!**

**Questions?**